

Spectral illumination test report

Sample Information:

Sample name : 240GL(1m)

Sample No: 01

DATE: 2025/03/19

Temperature: 25°C

Remark:

SAMPLE MODEL :

Manufacturer: -

Tester: ZHOU

Humidity: 55%RH

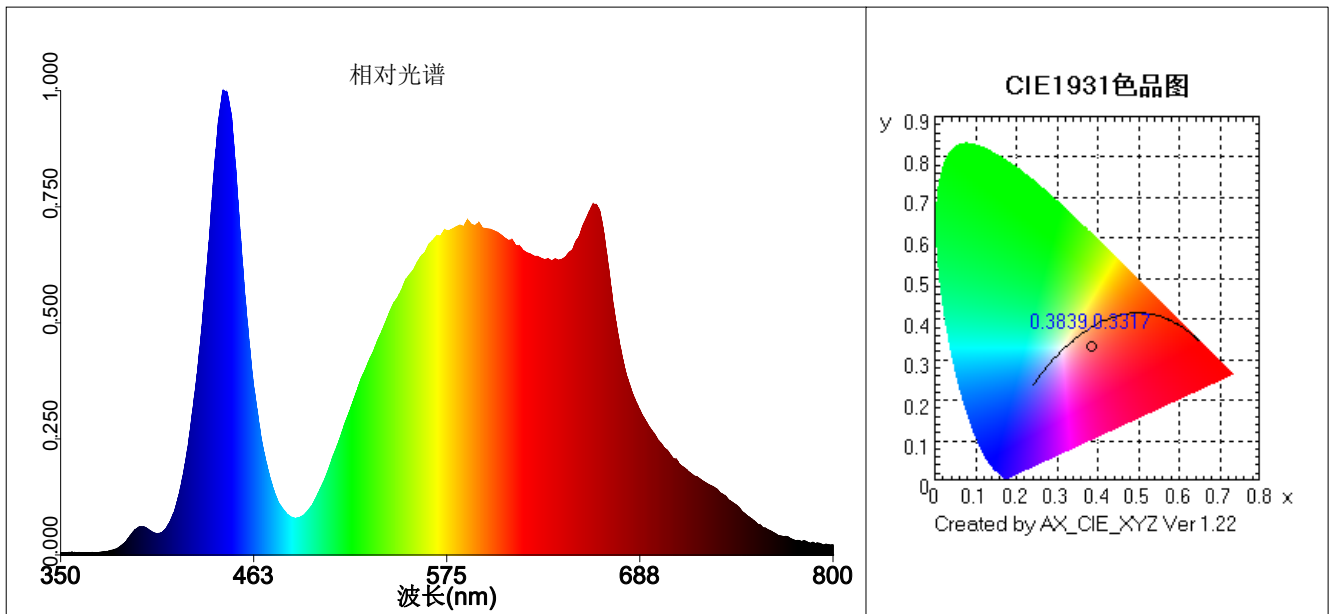
Instrument status:

Measuring instrument: PLA

Integration time: 8.7 ms

PEAK AD Ip: 42124.6

Average number of times: 1



Measurement parameters:

Illuminance E = 5.3025e+003 lx

Type your text

IlluminanceE((fc)=492.8 fc

IrradianceEe=0.0000e+000 W/m2

CIE-x= 0.3839

CIE-y= 0.3317

CIE-u'=0.2472

CIE-v'=0.4805

CCT=3481 K

Lp=445.0 nm

HW=26.2 nm

Ld=614.2 nm

Pur=14.7 %

RedRatio(%)=21.5

GreenRatio(%)=76.0

BlueRatio(%)=2.6

DUV=-0.0235

S/P=1.47

Ra=82.2

R1=85

R2=88

R3=84

R4=78

R5=82

R6=78

R7=84

R8=80

R9=57

R10=66

R11=72

R12=63

R13=84

R14=90

R15=90

SDCM=23.5(3500K/White)

White light level:OUT

Eb=0.00000 (W/m2)

Ey=6.94100 (W/m2)

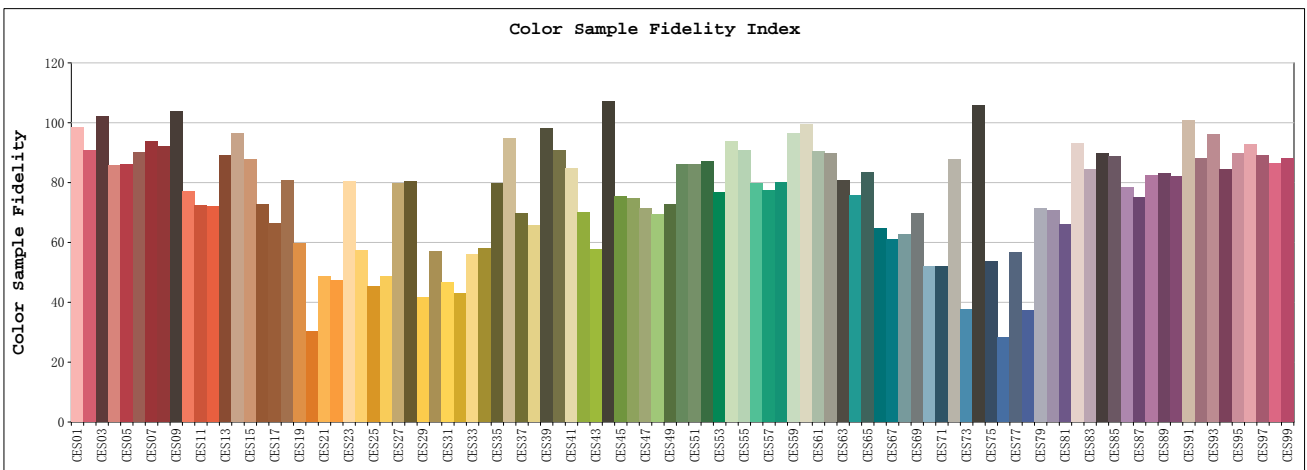
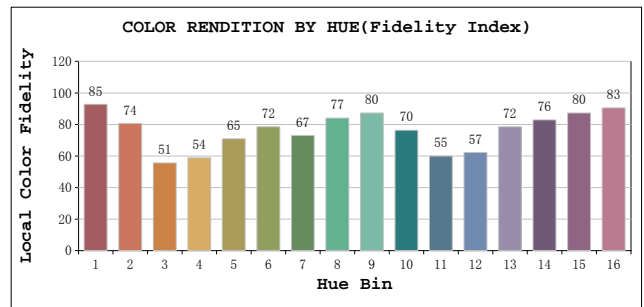
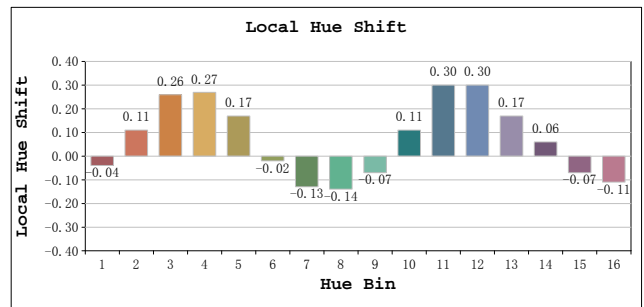
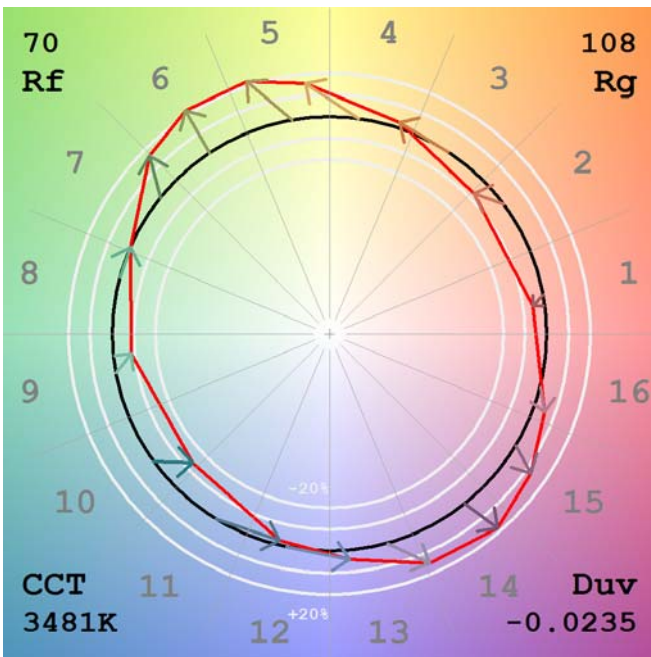
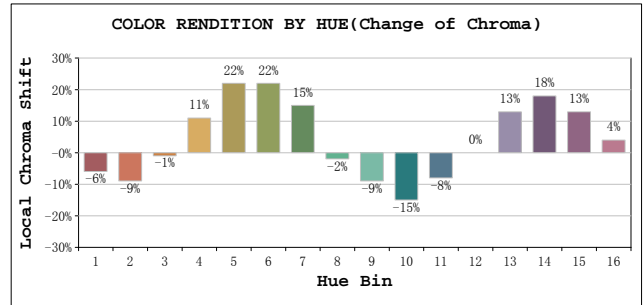
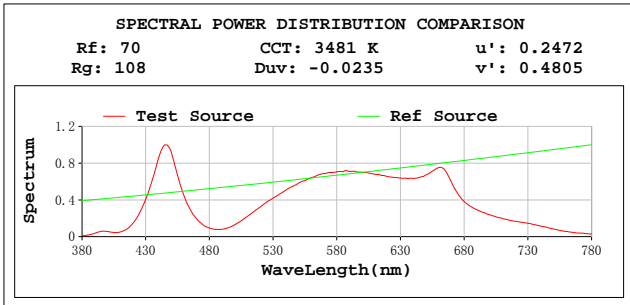
Er=7.67730 (W/m2)

Ep=16.82996 (W/m2)

PPFD=89.96430 (μmol·m⁻²·s⁻¹)

Erb_Ratio=1.76885

IES TM-30-18 Color Rendition Report



Colour Patches



Colourist's Advice Report

Sector	Lightness	Chroma	Hue
R	1	0	0
R/Y	2	1	6
Y	4	3	8
Y/G	1	3	1
G	1	3	-2
G/C	-3	0	-3
C	-5	0	3
C/B	-7	1	9
B	-1	5	5
B/M	-1	5	1
M	-1	4	-1
M/R	0	3	-3

SPECTRAL POWER DISTRIBUTION COMPARISON

TLCI-2012: 35

CCT: 3481 K

Duv: -0.0235

