

Spectral illumination test report

Sample Information:

Sample name: 2排20cm

Sample No: 03

DATE: 2025/03/19

Temperature: 25°C

Remark

SAMPLE MODEL :

Manufacturer

Tester: ZHOU

Humidity: 56%RH

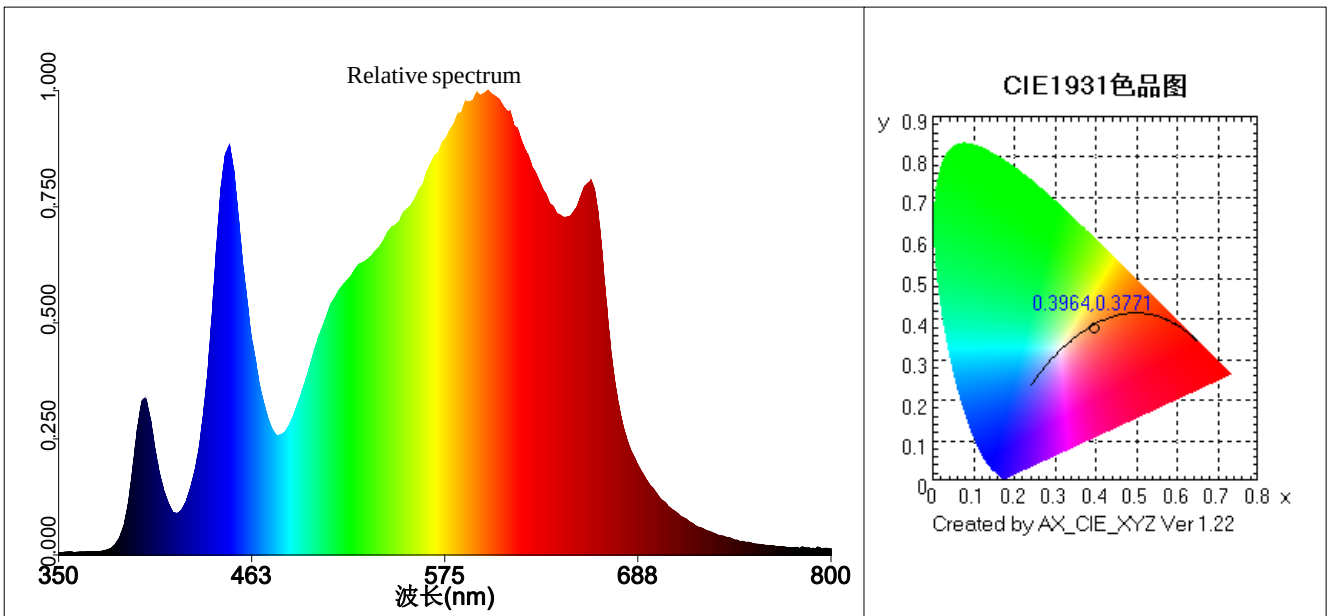
Instrument status:

Measuring instrument: PLA

Integration time: 8.5 ms

PEAKAD Ip: 42784.2

Average number of times: 1



Measurement parameters :

Illuminance E= 8.1537e+003 lx

IlluminanceE(fc)=757.776 fc

IrradianceEe=0.0000e+000 W/m2

CIE-x= 0.3964

CIE-y= 0.3771

CIE-u'=0.2355

CIE-v'=0.5041

CCT=3593 K

Lp=600.0 nm

HW=165.4 nm

Ld=582.6 nm

Pur=32.1 %

RedRatio(%)=20.4

GreenRatio(%)=76.2

BlueRatio(%)=3.4

DUV=-0.0041

S/P=1.60

Ra=87.2

R1=86

R2=92

R3=96

R4=87

R5=87

R6=89

R7=88

R8=73

R9=35

R10=82

R11=87

R12=76

R13=88

R14=98

R15=82

SDCM= 6.8(F3500)

White light level:C78.377_3500K

Eb=0.00017 (W/m2)

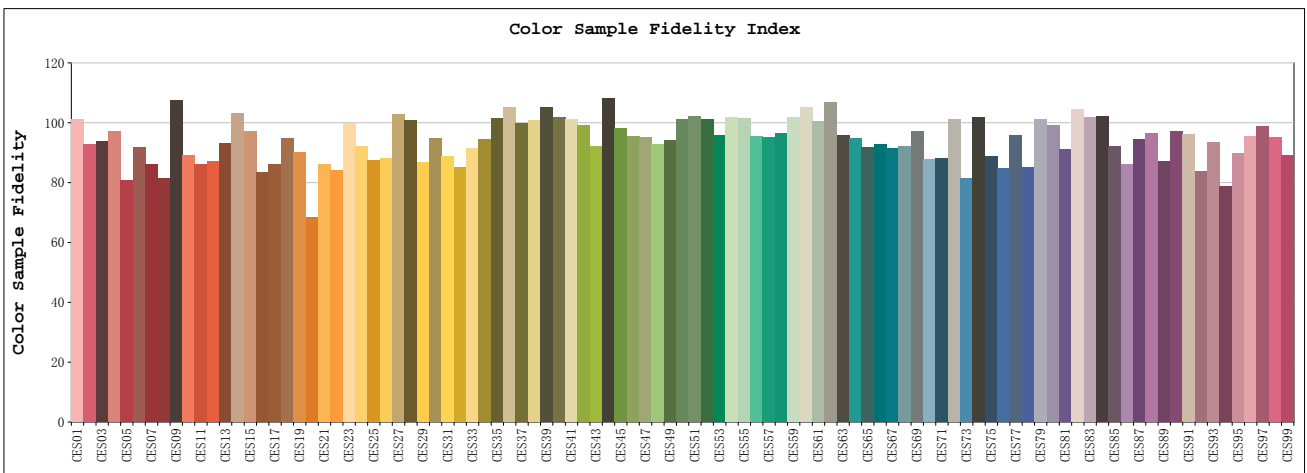
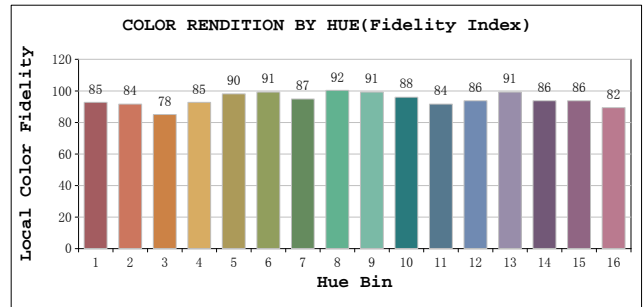
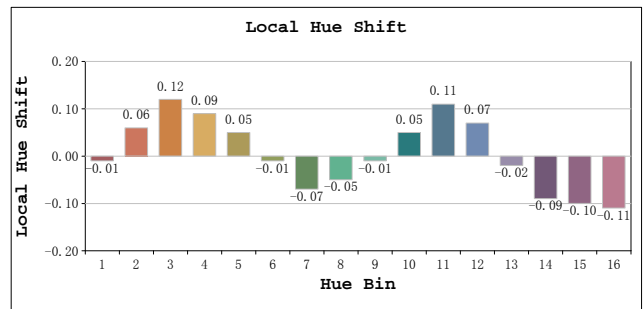
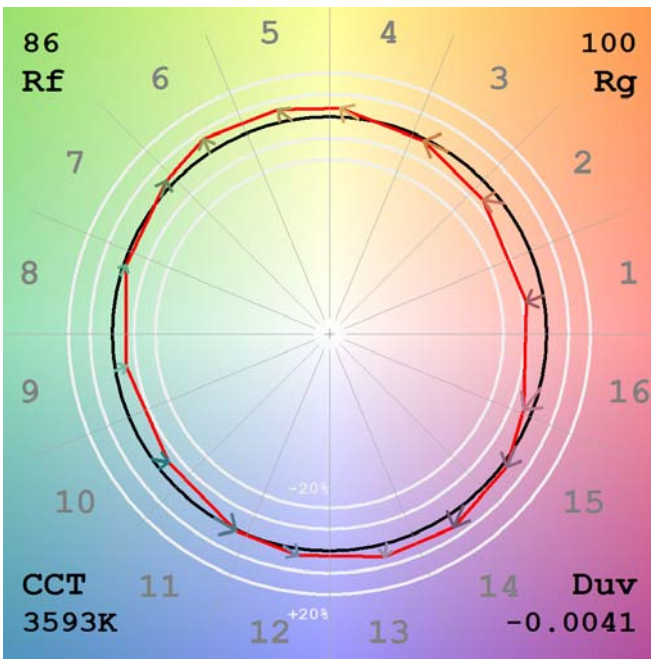
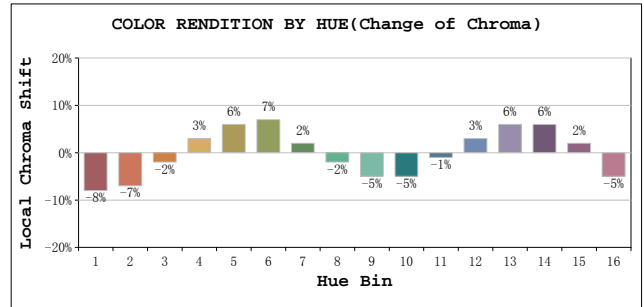
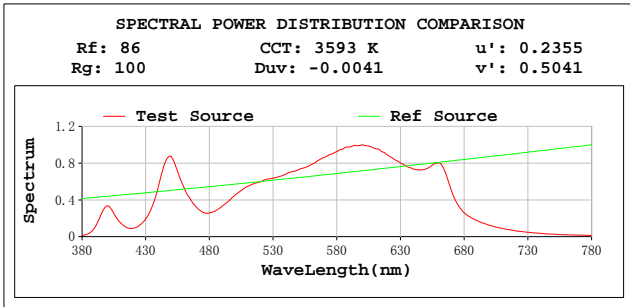
Ey=11.06628 (W/m2)

Er=9.53308 (W/m2)

Ep=23.05667 (W/m2)

PPFD=122.77137 (μmol·m-2·s-1) Erb_Ratio=1.75465

IES TM-30-18 Color Rendition Report



Colour Patches



Colourist's Advice Report

Sector	Lightness	Chroma	Hue
R	0	-1	0
R/Y	1	0	3
Y	2	1	4
Y/G	1	1	1
G	1	1	0
G/C	0	0	0
C	-1	-1	0
C/B	-4	1	5
B	-1	2	3
B/M	-2	2	-1
M	-1	1	-1
M/R	-1	0	-1

SPECTRAL POWER DISTRIBUTION COMPARISON

TLCI-2012: 71

CCT: 3593 K

Duv: -0.0041

